

Anti-human α -Synuclein mab 10C3

Catalogue number	Package size
847-0102001801	100 μ g
847-0102001803	1 mg

For research use only

Product:	monoclonal antibody
Clone:	10C3
Host:	mouse
Isotype:	IgG1 _k
Immunogen:	recombinant human α -Synuclein
Specificity:	human α -Synuclein
Purification:	purified by affinity chromatography
Purity:	> 95% by SDS-PAGE
Solution:	PBS pH 7.4 without additives
Storage:	at -20°C (repeated thawing and freezing should be avoided)
Applications:	ELISA, Western Blot, Immunohistochemistry (see figure below)
Dilution:	2 ng/ml in ELISA, 1-2 μ g/ml in Western Blot, 1-5 μ g/ml in IHC
Reactivity:	human α -Synuclein

Figure 1

Recombinant α -Synuclein (1) was separated by SDS-PAGE under none-reducing conditions and blotted on nitrocellulose membrane.

NC membrane was incubated by 5 μ g/ml of mab 10C3. Bound antibody was detected using horseradish peroxidase conjugated goat anti-mouse IgG/M antibody (ZYMED) and H₂O₂/TMB substrate solution.

Mab 10C3 reacted specifically with α -Synuclein.

MW (kDa) 1

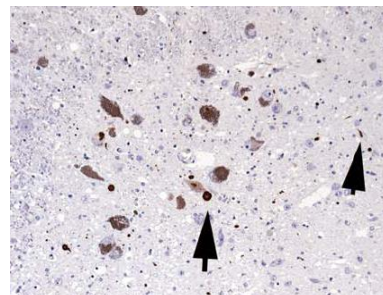
21 —



Figure 2

Detection of typical Lewy bodies and tiny Lewy neurites in Locus coeruleus of human Parkinson disease by 5 μ g/ml 10C3 and DAB staining.

Analyses were kindly performed by Dr. Gabor Kovacs, Medical University Vienna, Institute of Neurology, Austria.



Roboscreen GmbH
 Hohmannstraße 7
 04129 Leipzig • Germany

CEO
 Dr. Ingolf Lachmann

Phone: +49 341 989 734 0
 Fax: +49 341 989 734 199
info@roboscreen.com
www.roboscreen.com

Ust-IdNr. DE 813064314
 County Court Leipzig
 HRB 17503
 Leipzig