

Recombinant human α -Synuclein (rhu-alpha-Syn)

Catalogue number	Package size
847-0101008601	100 μ g
847-0101008602	500 μ g
847-0101008603	1 mg

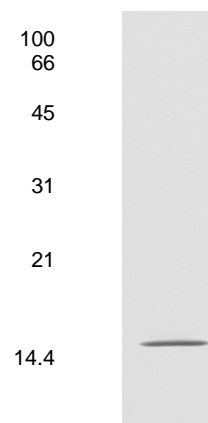
For research use only.

Product:	Recombinant protein
Description:	Full-length mature part of human α -Synuclein
Host:	<i>E. coli</i> BL21
Lentgh:	140 amino acids
Molecular weight:	15.3 kDa
Sequence:	MDVFMKGLSKAKEGVVAAAETKQGVAAEAGKTKEGVLYVGSKT KEGVVHGVATVAEKTKEQVTNVGGAVVTGVTAVAQKTVEGAGSIAAA TGFVKKDQLGK NEEGAPQEGILEDMPVDPDNEAYEMPSEEGYQDYPEA
Preparation:	<i>E. coli</i> supernatant was applied to purification
Purification:	Ion-exchange chromatography
Purity:	> 95% by SDS-PAGE
Solution:	20 mM phosphate buffered saline (PBS) pH 7.4
Storage:	at -20 °C (repeated thawing and freezing should be avoided)
Application:	ELISA, Western Blot, SDS-PAGE

Figure 1

1 μ g recombinant human α -Synuclein was separated by 14 % SDS-PAGE under reducing conditions and stained by Coomassie blue.

MW (kDa)



Roboscreen GmbH
Hohmannstraße 7
04129 Leipzig • Germany

CEO
Dr. Ingolf Lachmann

Phone: +49 341 989 734 0
Fax: +49 341 989 734 199
info@roboscreen.com
www.roboscreen.com

Ust-IdNr. DE 813064314
County Court Leipzig
HRB 17503
Leipzig